

At Grade Transit Boarding Platform



The Armor-Deck® At Grade panel system was developed to save time and cost in the installation of tactile on asphalt platforms. Hundreds of linear feet of the light weight panels can be installed per day without heavy equipment. The installed panels are then used as a form at one edge of the platform to place the asphalt or pavers. They are capable of accommodating curved platforms and contour to varying elevations. Precise tolerances are achieved through the integrated tongue and groove construction at panel joints.

The enhanced design of the detectable warning surface provides a safer and more accessible walking surface for the mobility impaired, the elderly and visually impaired individuals. The surface is very slip resistant in either wet or dry conditions.

The panels are not affected by freeze and thaw and transition smoothly to adjoining asphalt, paver, concrete and wood surfaces.

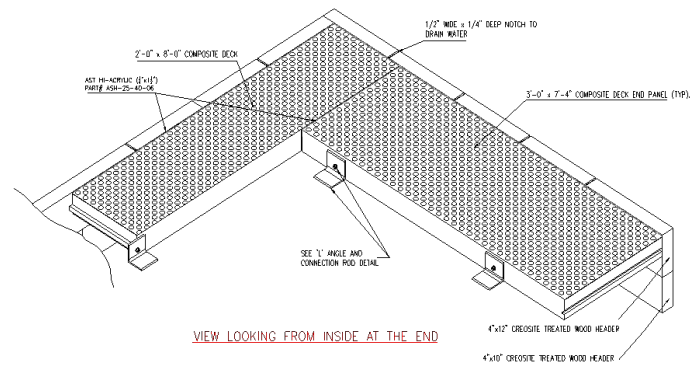
The Armor-Deck® panels are made of a high density, non-porous material which does not fatigue or corrode. The reinforced polymer composite is molded into a structural precast panel which can withstand vehicular loading. These panels have proven to be the most durable tactile system available for asphalt platforms. They have been installed in approximately 100 stations since 2002.

PRODUCT FEATURES

- Light weight
- Zero maintenance
- Ease of installation
- Impervious to salt, chemicals and freeze/thaw
- Factory installed detectable tactile warning and non-slip panel surfaces
- Panels may be curved to match track radius and sloped for drainage and crossings

See back for details.

ARMOR-DECK® At Grade Transit Boarding Platform



Above example: 8" x 2' wide standard panels and 3' wide panels for crossing sections and end returns bolted through wood header

Related Transit Solutions



Elevated Platform Systems



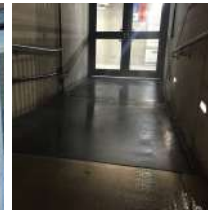
Ramps



Stairs



Pedestrian Bridges



Nexatherm® Snow and Ice Melting Solutions

Contact Kinesik Engineered Products for a quick quote or to obtain more information about our innovative solutions for infrastructure and mass transit applications.

KINESIK Engineered Products Incorporated

2213 North Sheridan Way
Mississauga, Ontario L5K 1A3
Canada

Phone: 855.364.7763
Fax: 800.769.4463
www.kinesik.ca